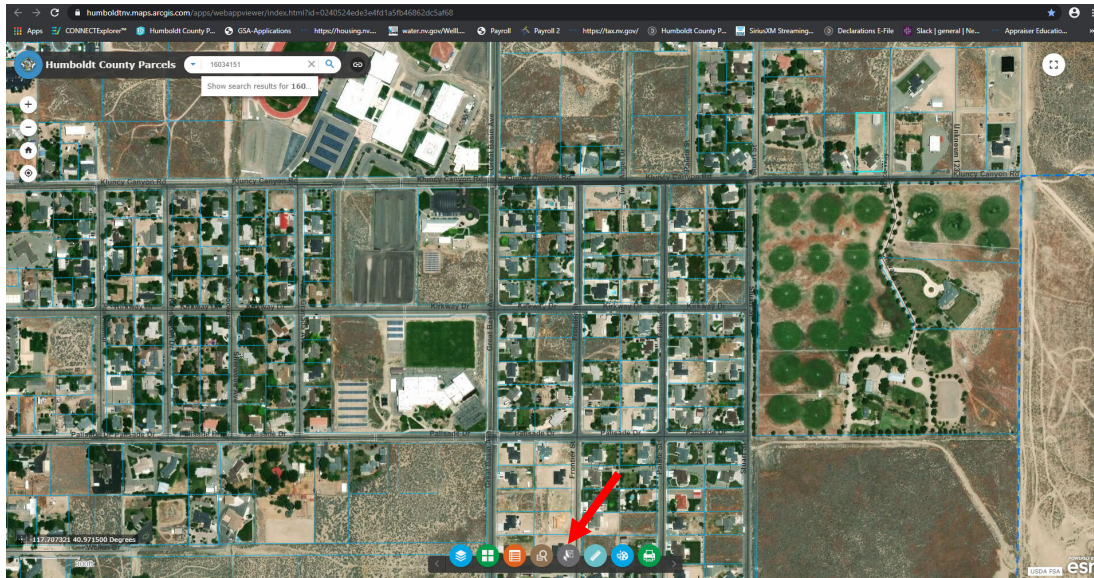
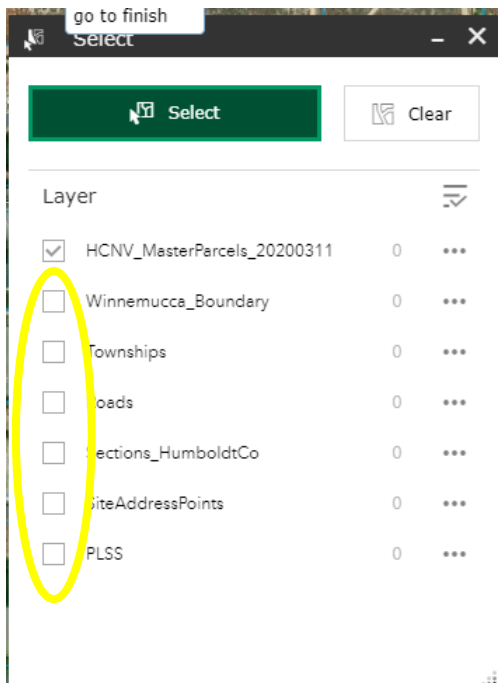


To run a basic query online through ArcGIS follow the steps below:

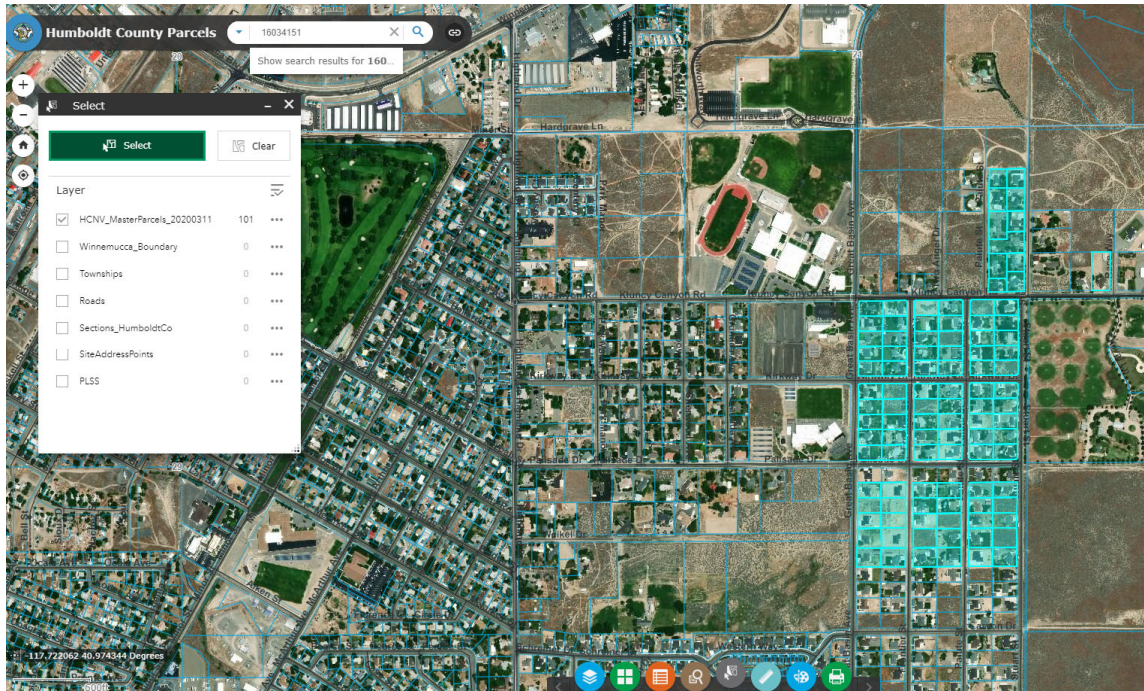


Click on the grey button at the bottom of the screen that says “select”. That will bring up a box that looks like this:



For best results unselect all of the boxes except for the HCNV_MasterParcel option. You can pick your selection tool that best fits what you want (rectangle/polygon/circle/lasso). Click the green select box and it will become highlighted. If you hover back over the green box it will give you additional options to select or deselect parcels that you will want in your query. You will also know you are in select mode when your cursor has text next to it that says to press and hold to select parcels.

Below you will see the map with 101 highlighted parcels in my query.



Next you will click on the three dots next to the 101 and select Export to CSV file. This will take your results and put them into an excel spreadsheet. From there you can manipulate the data anyway you would like. Most of the common data that is used from the export starts in column BE through CG.

