

HUMBOLDT COUNTY

SW1/4 NW1/4, NW1/4 SW1/4 SEC. 25 T.42N. R.39E.

Paradise Valley

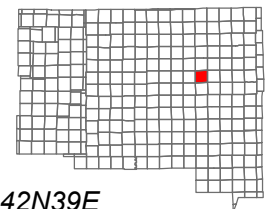
NOTE: This plat is for assessment purposes only and does not represent a survey of the lands on this plat.



Map Prepared by:
HUMBOLDT COUNTY ASSESSOR'S OFFICE
WINNEMUCCA, NEVADA 89445

4-53

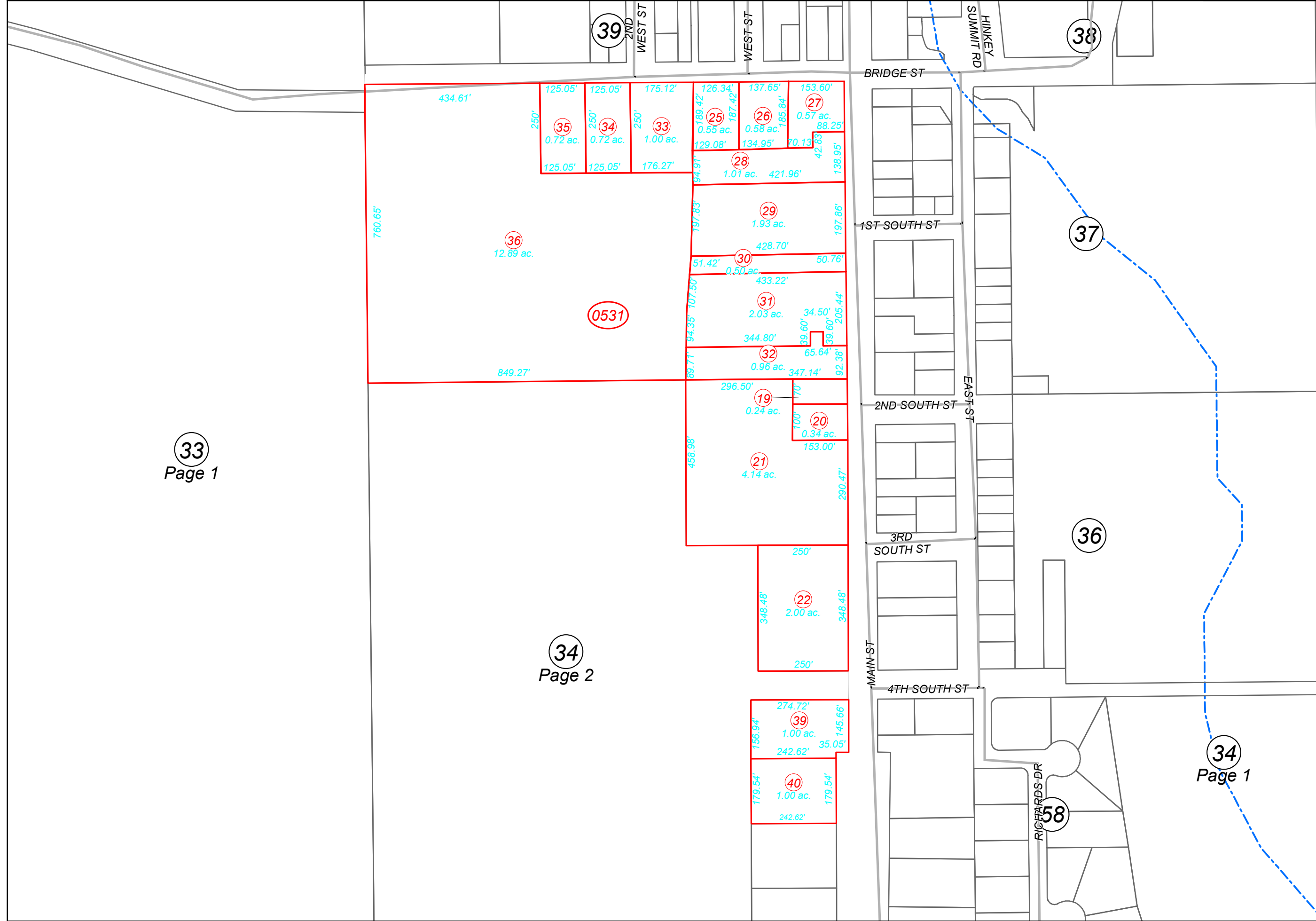
1"=250'
M.D.B. & M.



06	05	04	03	02	01
07	08	09	10	11	12
18	17	16	15	14	13
19	20	21	22	23	24
30	29	28	27	26	25
31	32	33	34	35	36



42N39E



33
Page 1

34
Page 2

34
Page 1