

06	05	04	03	02	01
07	08	09	10	11	12
18	17	16	15	14	13
19	20	21	22	23	24
30	29	28	27	26	25
31	32	33	34	35	36



HUMBOLDT COUNTY

S1/2 NE1/4, NE1/4 SE1/4 SEC. 33 T.41N. R.37E.

S1/2 NW1/4, N1/2 SW1/4 SEC. 34 T.41N. R.37E.

NOTE: This plat is for assessment purposes only
and does not represent a survey of the lands on this plat.



Map Prepared by:
HUMBOLDT COUNTY ASSESSOR'S OFFICE
WINNEMUCCA, NEVADA 89445

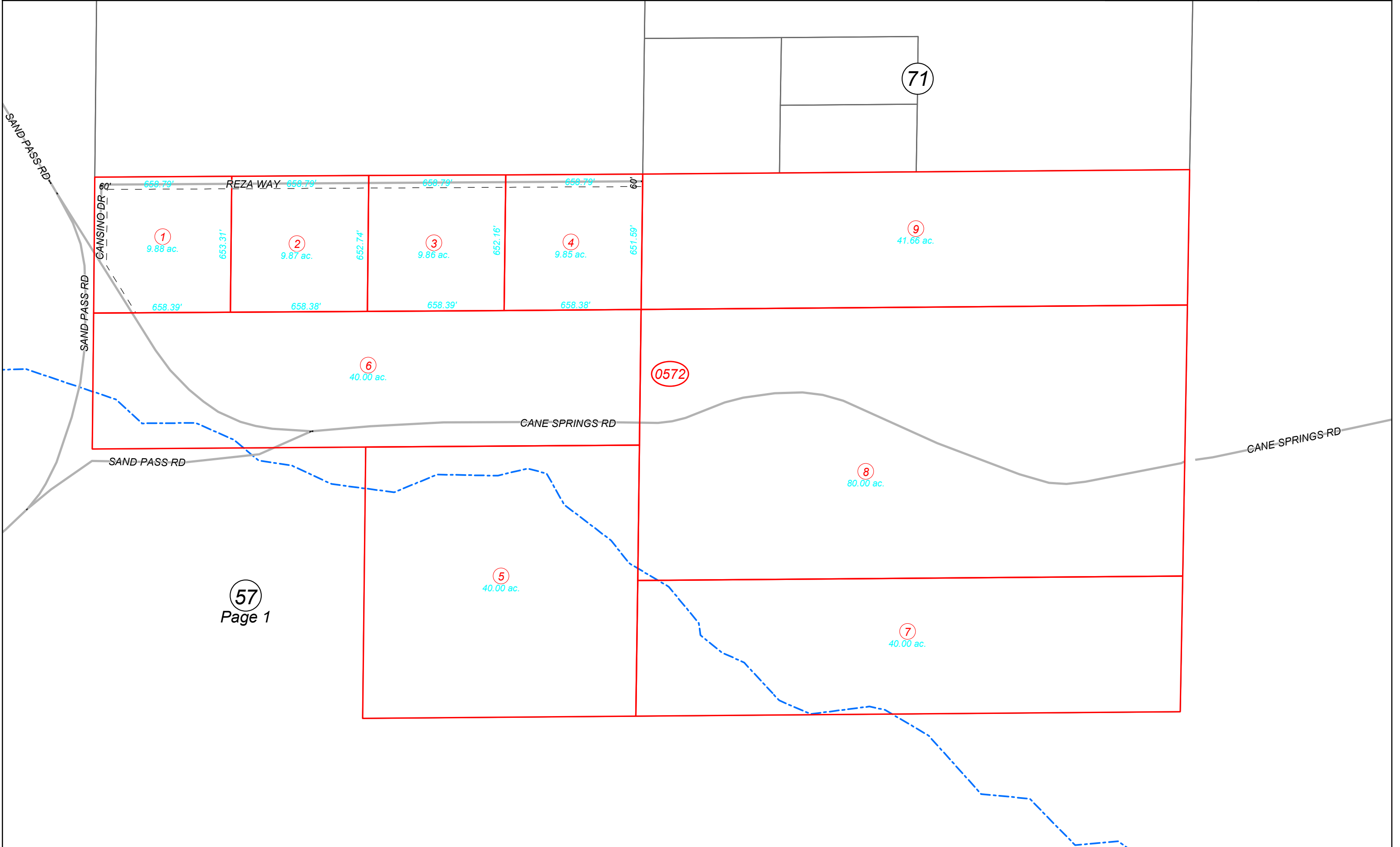
3-57

Page 2 of 4

1"=400'

M.D.B. & M.

41N37E



57
Page 1