

06	05	04	03	02	01
07	08	09	10	11	12
18	17	16	15	14	13
19	20	21	22	23	24
30	29	28	27	26	25
31	32	33	34	35	36



HUMBOLDT COUNTY
PT. N1/2 SEC. 11 T.44N. R.37E.

NOTE: This plat is for assessment purposes only
and does not represent a survey of the lands on this plat.

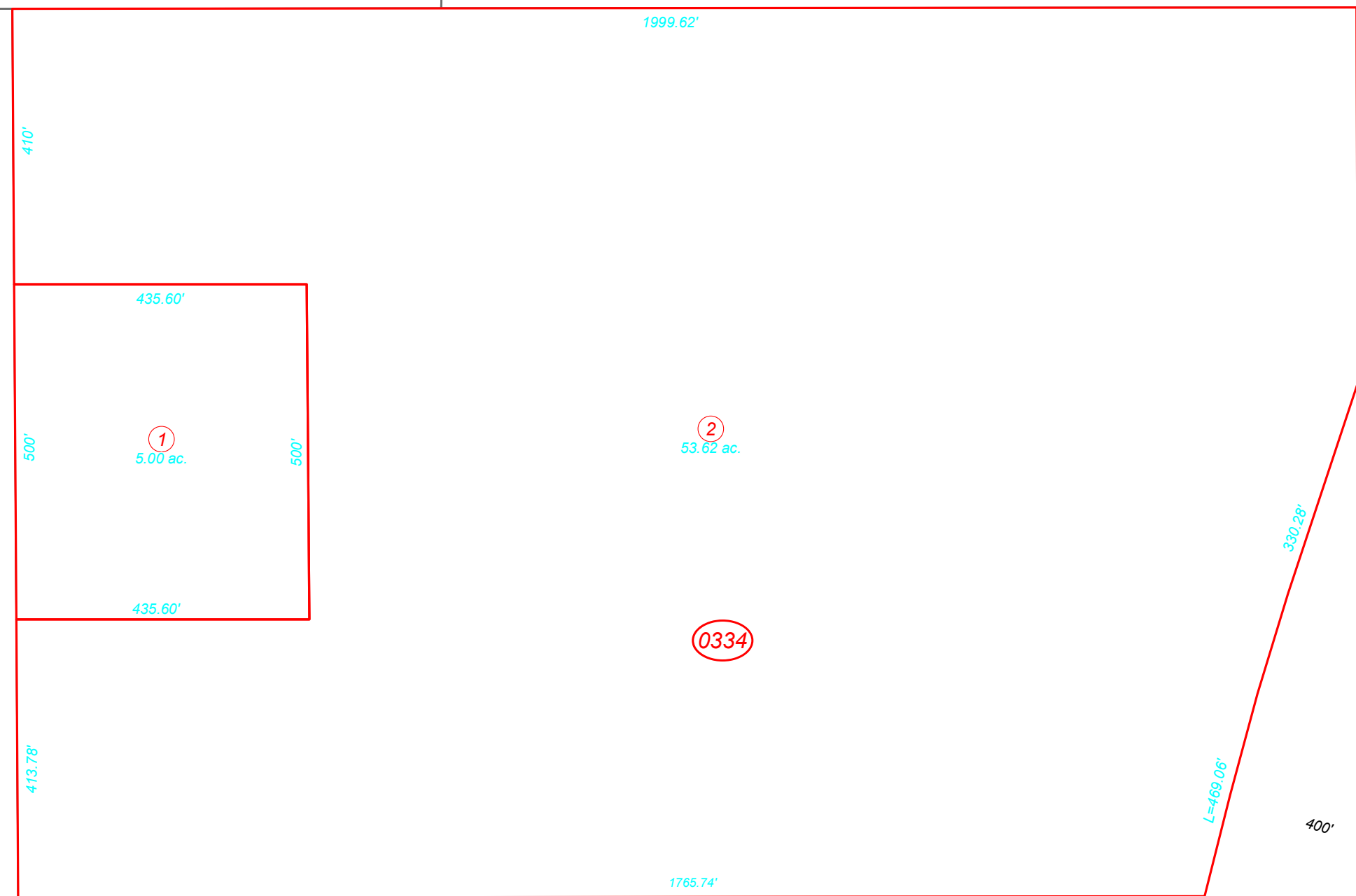


Map Prepared by:
HUMBOLDT COUNTY ASSESSOR'S OFFICE
WINNEMUCCA, NEVADA 89445

44N37E

34

33
Page 1



L=469.06'

330.28'

400'

US 95 HWY