

|    |    |    |    |    |    |
|----|----|----|----|----|----|
| 06 | 05 | 04 | 03 | 02 | 01 |
| 07 | 08 | 09 | 10 | 11 | 12 |
| 18 | 17 | 16 | 15 | 14 | 13 |
| 19 | 20 | 21 | 22 | 23 | 24 |
| 30 | 29 | 28 | 27 | 26 | 25 |
| 31 | 32 | 33 | 34 | 35 | 36 |



# HUMBOLDT COUNTY

T.45N. R.34E.



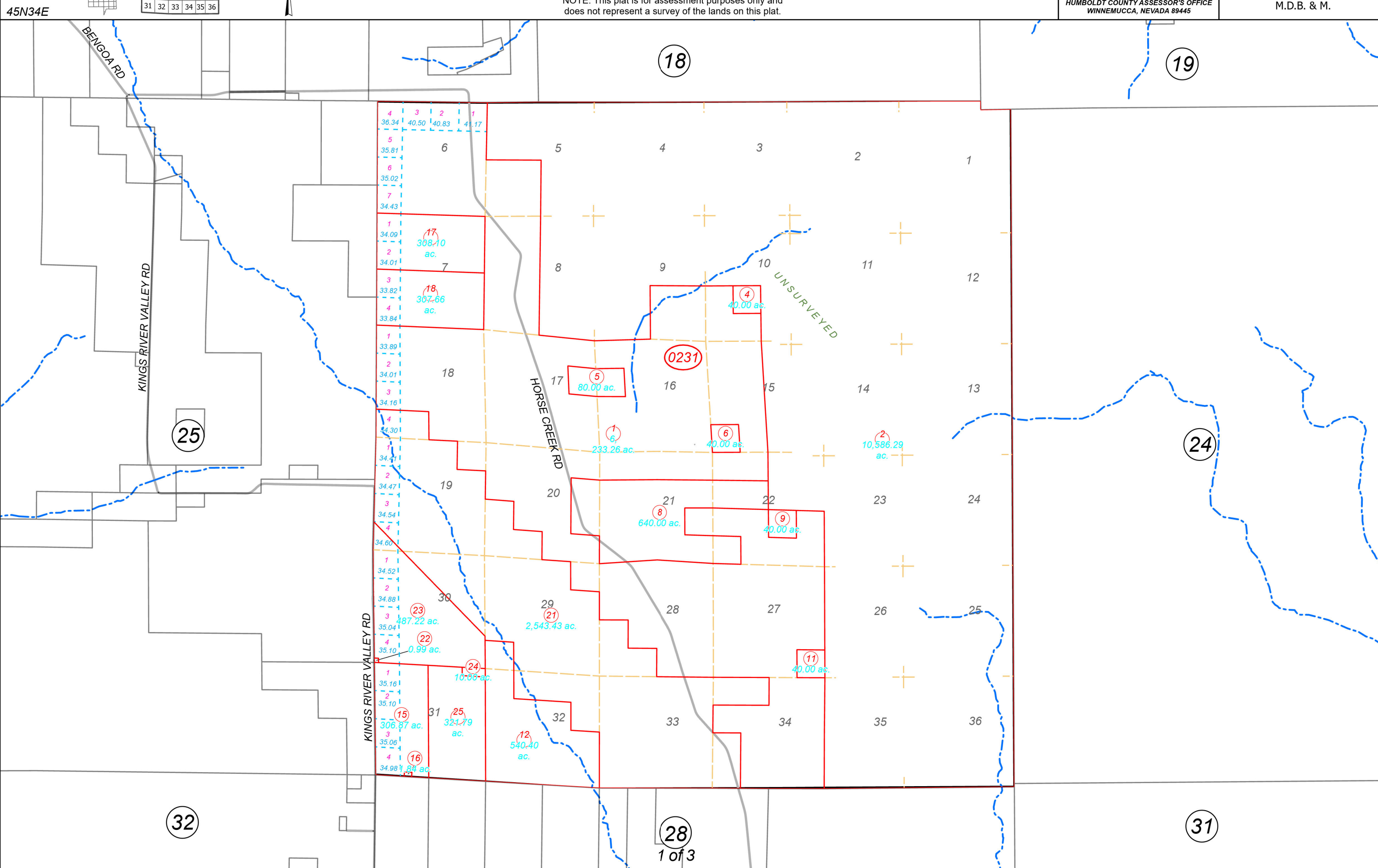
Map prepared by:  
HUMBOLDT COUNTY ASSESSOR'S OFFICE  
WINNEMUCCA, NEVADA 89445

## 3-23

1"=4,000'

M.D.B. & M.

NOTE: This plat is for assessment purposes only and does not represent a survey of the lands on this plat.



28

1 of 3

31